

# Spring Cove School District

2013-14

Budget Workshop

April 1, 2013



# Spring Cove School District

## Agenda for the evening:

- Review the Developing Budget
- Discussion and Remarks on Educational Initiatives for 2013-14
- Comments and Questions



# Spring Cove School District

## Board Meetings to Follow

- April 8, 2013- Committee of the Whole
- April 15, 2013- Regular Board
- April 30, 2013- Budget Meeting II
- May 13, 2013- Committee of the Whole
- May 20, 2013- Regular Board, Preliminary Budget
- June 17, 2013- Committee of the Whole
- June 24, 2013- Regular Board, Final Budget



Spring Cove  
School District

# Board Budget Book



# Spring Cove School District

## Major Budget Factors

### Expenditure Side

- Salaries
- Benefits-Retirement, Healthcare
- Energy and Power
- Special Education Costs
- Debt- Interest and Principal

### Revenue Side

- Governor's Budget – Basic Education Funding
- Local Effort



# Spring Cove School District

## Salaries and Budgeted Increases

	<u>12/13</u>	<u>13/14</u>	<u>Increase</u>
• Administration	\$603,613	\$500,298	(\$103,314)
• Teaching Staff	\$6,608,480	\$6,713,392	\$104,912
• <u>Support Staff</u>	<u>\$1,536,350</u>	<u>\$1,620,959</u>	<u>\$ 84,609</u>
• Total Salary Increase			\$86,207



# Spring Cove School District

Retirement- percentage change from 12.36% to 16.93%

Effective increased cost:

• Administrators	\$ 5,047
• Teaching Staff	\$ 159,884
• <u>Support Staff</u>	<u>\$ 42,268</u>
• Total Increased Cost	\$ 207,199



# Spring Cove School District

## Healthcare

### Format of Coverage

- Administrators and Teachers- An IRS high qualifying plan with deductibles of \$1,250 and \$2,500. Every dollar paid up to the deductible.
- Support Staff- Non qualifying plan with a deductible of \$2,000 and \$4,000. Copays do apply to this plan.
- Employees working more than 1,274 hours.
- Employees pay \$600 per year.
- PPACA- not this year.
- Combined annual premium is \$ 1,657,484
- Increase expected 3.5 - 4.5 percent or \$ 66,299





# Spring Cove School District

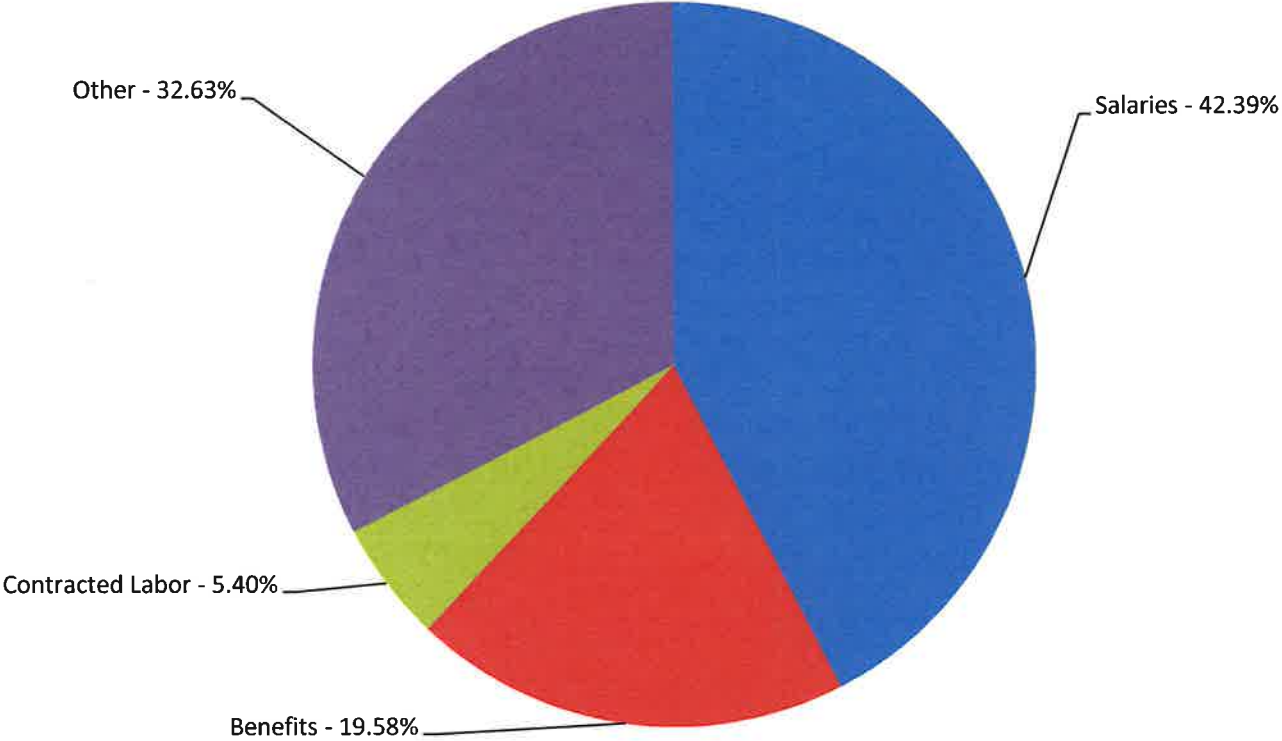
## Contracted Services- Invisible Labor

- Speech, Occupational and Physical Therapy
- Lawn Mowing, Snow Plowing, Technology Support, Transportation, Systems Maintenance, and Special Education
- Total cost \$1,264,757



# Spring Cove School District

## 2013/14 BUDGET -- LABOR COSTS



# Spring Cove School District

## Energy and Power

The District relies primarily on natural gas for heating purposes and electricity for cooling and domestic use.

Natural gas is purchased on the futures market by the district and electricity is purchased through a cooperative likewise on the futures market.

Oil heating is available source at the Martinsburg Elementary school and Central High school.

Recent projects that upgraded the domestic hot water systems at MES and CHS are budgeted to save over \$50,000 in this year's budget.



# Spring Cove School District

## Energy and Power

- Budgeted cost for 2012-13- \$ 642,798
- Budgeted cost for 2013-14- \$ 584,298
- Energy conservation has been a considerable factor in financing capital improvement projects district wide.



# Spring Cove School District

## Special Education Costs

Costs for meeting Special Education needs has been budgeted for the 2013-14 year according to the expected cost based on actual 2012-13 expenditures to date.

- Special Education Costs 2012-13           \$ 3,151,568
- Special Education Costs 2013-14       \$ 2,996,135
- Net Categorical Decrease                 \$ 155,433
  
- State Funding                                 \$ 1,064,430



# Spring Cove School District

## Special Education Costs

- The cost of providing for the needs of a Special Education student in fulfilling their Individual Education Plan (IEP) continues to carry a cost significantly higher than that for the cost of a regular education student.

## PDE-363 Calculation

- |                             |             |
|-----------------------------|-------------|
| • Regular Education Student | \$ 7,454.69 |
| • Special Education Student | \$14,991.52 |



# Spring Cove School District

## Cyber Charter Schools

### Current enrollment and cost

Regular Ed.	30 students	\$ 223,641
<u>Special Ed.</u>	<u>3 Students</u>	<u>\$ 44,974</u>
Total Cost		\$ 268,615

Spring Cove Cyber 25 students up from 16 in 2011/12.



# Spring Cove School District

## Athletic Programs

- Major new accounting responsibilities will be effect summer 2013 and additional requirements in the 2013-14 school year.
- This is due to significant up dates to the new disclosure of athletic opportunities requirements documentation under Title IX.
- Athletic departments across the state are being required to delineate the resources allocated to male and female sports.
- For the 2013-14 year the tracking of booster group contributions to Athletic programs will begin and this mandate will significantly increase the documenting and tracking of expenditures and contributions by the Business Office as well as Athletic Department.





# Spring Cove School District

## Athletic Program Costs

- Athletic Fund Net Costs \$ 19,897
- General Fund Athletic Costs \$ 265,150
- Property Maintenance \$ 63,202
- Athletic Office Staff Costs \$ 69,309
  
- Total Program Cost \$ 417,558
  
- Percentage of budget, 1.78%



# Spring Cove School District

## Debt – Interest and Principal

- This 2013-14 school year will be the last year of a decreased cost for bond costs due to the refinancing of bonds issued in 2005 and 2007.
- Total payment due 2012-13                      \$ 1,240,648
- Total payment due 2013-14                      \$ 1,787,528
- Total payment due 2014-15                      \$ 2,020,613
- Jump 2014-15                                         \$ 233,085

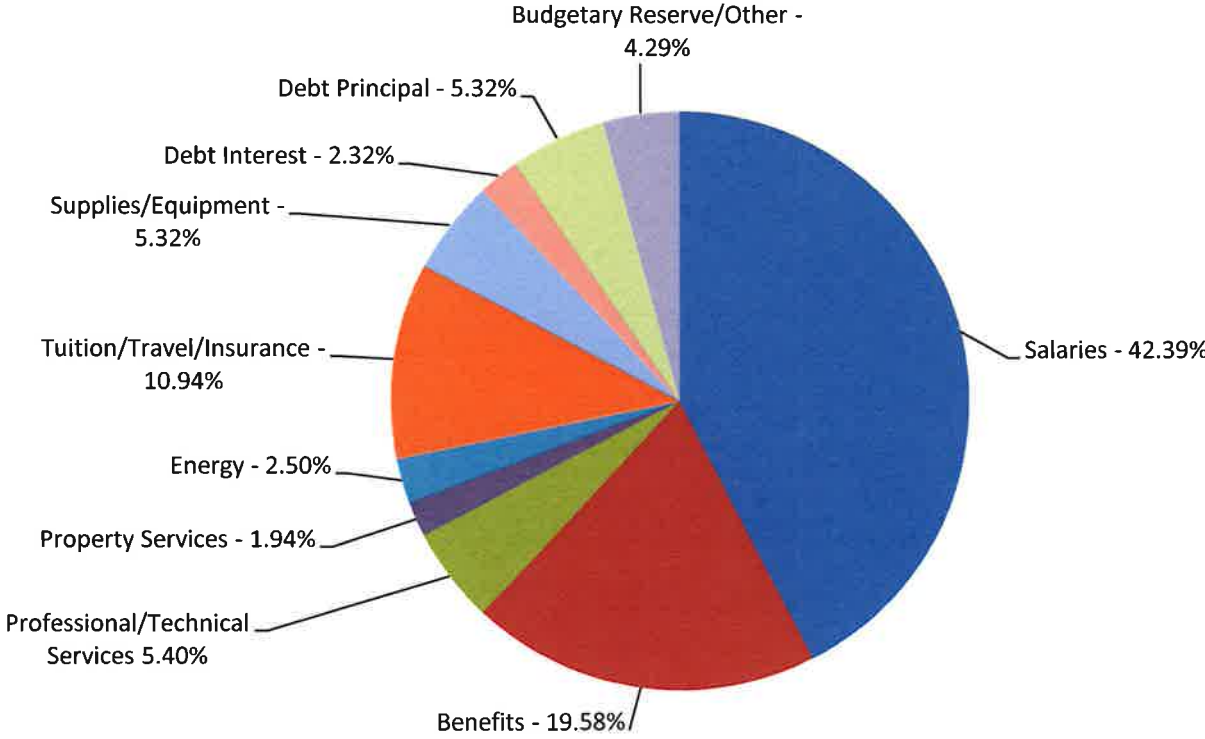


# Spring Cove School District

	2012/13 APPROVED BUDGET	2012/13 INC/DEC OVER 2011/12	2013/14 PROPOSED BUDGET	2013/14 INC/DEC OVER 2012/13
100 -- SALARIES & WAGES	9,835,669	5,135	9,921,876.00	86,207.00
200 -- EMPLOYEE BENEFITS	4,222,375	252,992	4,582,517.58	360,142.93
300 -- PURCHASED PROFESSIONAL & TECHNICAL SERVICES	1,079,939	(272,371)	1,264,757.00	184,818.00
400 -- PURCHASED PROPERTY SERVICES	727,725	14,307	723,198.00	(4,527.00)
500 -- OTHER PURCHASED SERVICES	2,511,362	(149,203)	2,559,811.00	48,449.00
600 -- SUPPLIES	1,077,965	114,127	1,245,249.00	167,284.00
700 -- PROPERTY	120,922	25,200	316,210.00	195,288.00
800 -- OTHER OBJECTS	1,551,486	(47,663)	1,403,260.76	(148,225.24)
900 -- OTHER FINANCING USES	1,285,000	75,000	1,388,554.00	103,225.24
<b>TOTAL EXPENDITURES &amp; OTHER FINANCING USES</b>	<b>22,412,443</b>	<b>17,524</b>	<b>23,405,433</b>	<b>992,662</b>

# Spring Cove School District

## 2013/14 Expenditures Budget -- Total Expenditures of \$23,405,433



# Spring Cove School District

## Revenues

- Federal Funding- very little change in the 2013-14 budget from the 2012-13.
- State funds- Currently the Governor is proposing a \$105,436 increase in Basic Education Funding.
- No further changes in other funding areas are expected.
- It is very early to count on these numbers.

# Spring Cove School District

## Local Funding

• Property Tax at the Current Millage	\$8,264,420
• Capital Projects Fund transfer	\$ 143,554
• Earned Income Tax	\$ 975,000
• Other taxes, Per Cap etc.	\$ 619,788
• Act 1 index maximum	\$ 191,284



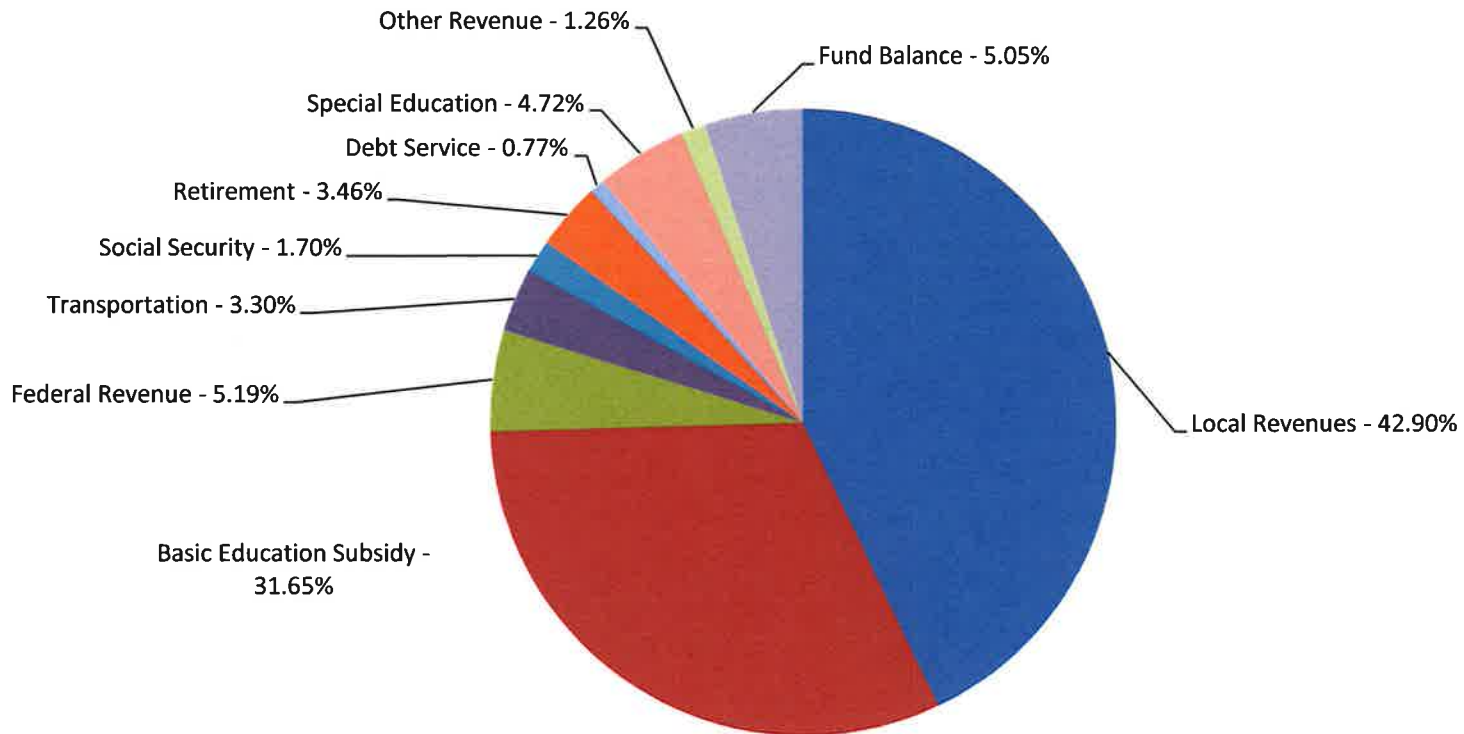
# Spring Cove School District

	2012/13	2012/13	2013/14	2013/14
	APPROVED	INC/DEC OVER	PROPOSED	INC/DEC OVER
	BUDGET	2011/12	BUDGET	2012/13
FUNCTION 6000 -- LOCAL REVENUES	10,079,490	282,124	10,375,288	295,798
FUNCTION 7000 -- STATE REVENUES	10,985,740	518,803	10,934,015	(51,725)
FUNCTION 8000 -- FEDERAL REVENUES	998,179	8,527	914,431	(83,748)
<b>TOTAL REVENUES</b>	<b>22,063,409</b>	<b>809,454</b>	<b>22,223,734</b>	<b>160,325</b>



# Spring Cove School District

## 2013/14 Revenues Budget -- Total Revenues of \$23,405,433





# Spring Cove School District

## Current Budget Imbalance

• Revenues	\$ 22,223,734
• Expenditures	\$ 22,745,433
plus Budgetary Reserve	\$ 660,000
• Total Expenditures	\$ 23,405,433
• Net	\$ (1,181,699)



# Spring Cove School District

## Funds of the District

- Cafeteria Fund \$ 335,468
- Athletic/Activities Fund \$ 90,521
- Capital Projects Fund \$ 143,554
- General Fund \$ 6,840,584



# Spring Cove School District

- General Fund Budget Balance - \$6,840,584
- Restricted- \$102,992
- Assigned- \$ 1,974,576 Long Term Debt  
\$ 750,000 Capital Projects
- Unassigned- \$ 2,613,016
- Committed- \$400,000 Employee Benefits  
\$1,000,000 Fiscal Stabilization



# Spring Cove School District

## New Curriculum and Educational Initiatives Impacting the Budget

- One to One Computing
- Stem Program- Project Lead the Way
- Language Arts Elementary
- Math and Science Middle School / Sr. High School
- Soft Books or Hard Books
- Consumer Sciences Start Up Costs at SCMS

## Facilities

- Emergency Management Planning
- Facilities Plans
- HVAC at Central High- ESCO



# Spring Cove School District

## Questions concerning the budget.

Still to come:

- Program and curriculum remarks and discussion.
- Comments and questions from the public.

